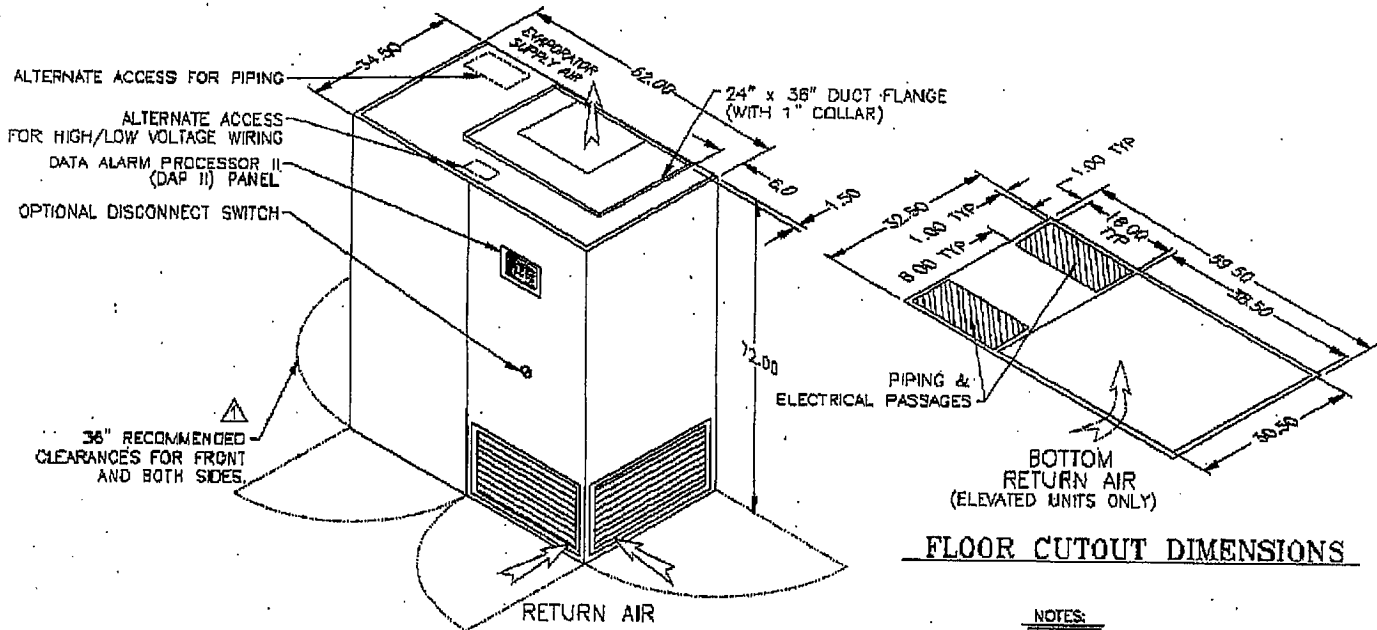




DATA AIRE 6, 8, & 10 TON, UPFLOW

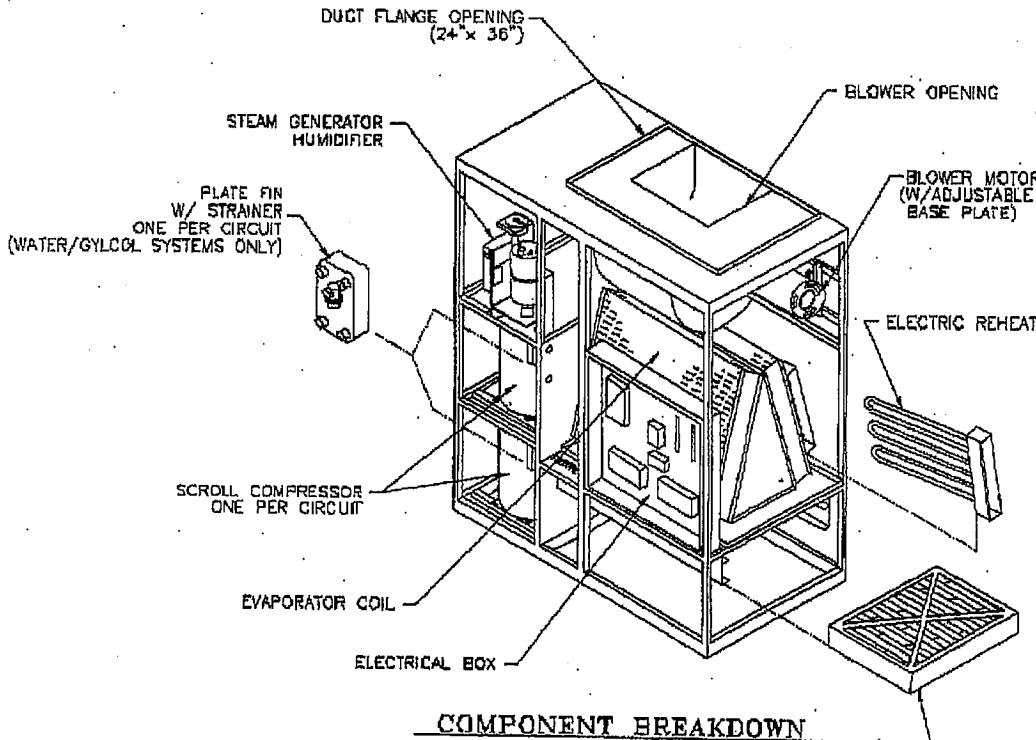


DIMENSIONAL DATA

FLOOR CUTOUT DIMENSIONS

NOTES:

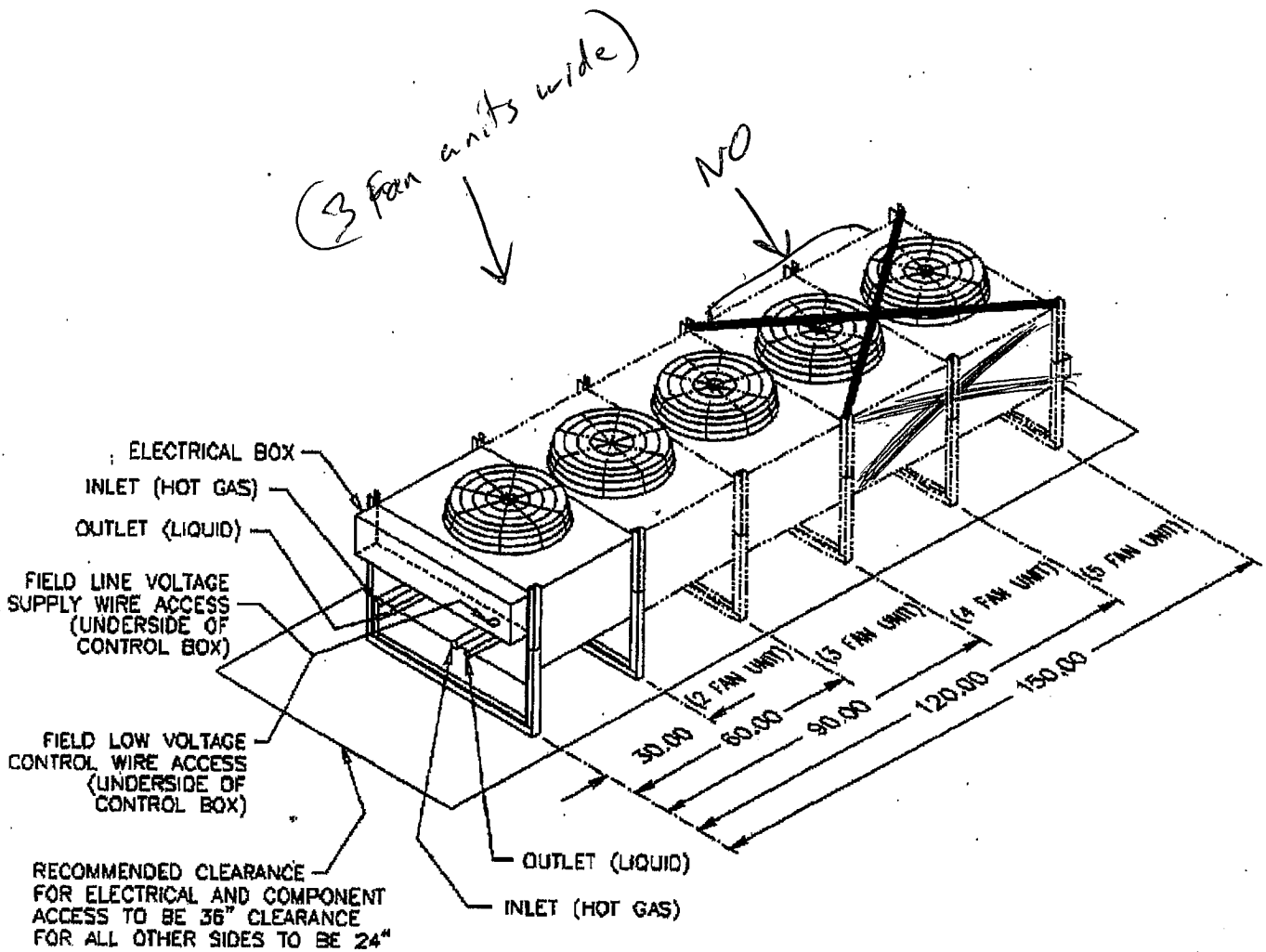
- 1. DIMENSIONS NOTED ARE THE MINIMUM CLEARANCES REQUIRED BY THE FACTORY. CONSULT LOCAL BUILDING CODES AND NEC FOR ADDITIONAL CLEARANCE REQUIREMENTS.
- 2. ALL REFRIGERATION PIPING TERMINATES INSIDE CABINET.
- 3. OPENINGS ARE NOT PROVIDED FOR ALTERNATE ACCESS LOCATIONS.
- 4. ALL COMPONENTS AND OPTIONS ARE NOT SHOWN.



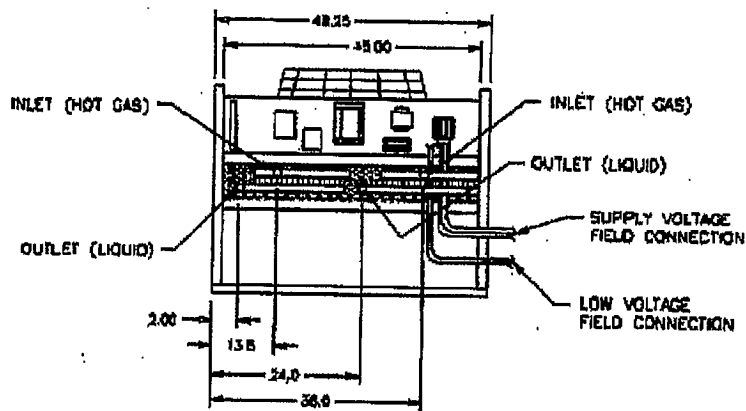
COMPONENT BREAKDOWN

6, 8, & 10 TON UNITS DATA AIRE UPFLOW	
DATA AIRE INC. A CONSTRUCTION SPECIALTIES INC Company	
DRAWN BY: G.SALDIVAR	SCALE: NONE
CHECKED BY: DX 2-DUPKLA	
DATE: 03-01-06	SHT. 1 OF 1
MATERIAL:	P/B NONE
2 DOOR UPFLOW DA UNIT PART OF	
6, 8, & 10 TON PART NO.	

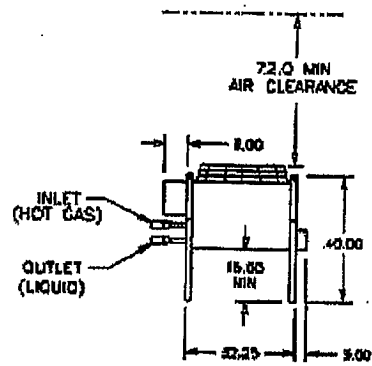
REVISIONS			
REV	DESCRIPTION	DATE	BY
A	CHANGED SUPPLY AIR ARROW TO STRAIGHT CHANGED CONDENSER TO PLATE FIN	03-01-06	GS



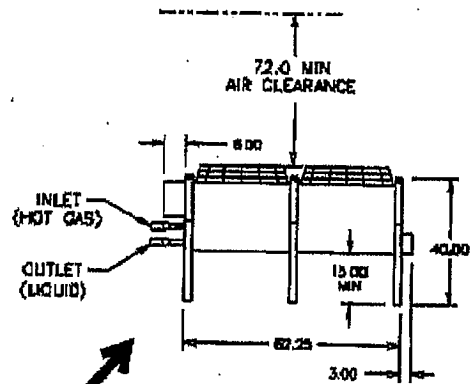
MODEL NUMBER	LENGTH	UNIT NET WT #	PIPE CONNECTION SIZES (COPPER STUDIOS)		QTY. MOTORS	STANDARD CONDENSER				
			HOT GAS	LIQUID		HP	RPM	TOTAL CFM	MOTOR FLA	
									208/230V	480V
DARC 06	32-1/4"	220	1-1/8	7/8	1	3/4	1075	6000	4.2	2.1
DARC 07	32-1/4"	250	1-1/8	7/8	1	3/4	1075	4900	4.2	2.1
DARC 09	32-1/4"	270	1-1/8	7/8	1	3/4	1075	4800	4.2	2.1
DARC 11	52-1/4"	300	1-1/8	7/8	2	3/4	1075	10400	8.4	4.2
DARC 15	52-1/4"	310	1-1/8	7/8	2	3/4	1075	10000	8.4	4.2
DARC 17	52-1/4"	320	1-3/8	7/8	2	3/4	1075	9800	8.4	4.2
DARC 21	82-1/4"	450	1-1/8	7/8	3	3/4	1075	15000	12.6	6.3
DARC 24	82-1/4"	520	1-3/8	7/8	3	3/4	1075	14750	12.6	6.3
DARC 28	82-1/4"	530	1-3/8	7/8	3	3/4	1075	14500	12.6	6.3
DARC 30	122-1/4"	610	1-3/8	7/8	4	3/4	1075	20000	16.8	8.4
DARC 37	122-1/4"	700	1-5/8	1-1/8	4	3/4	1075	19500	16.8	8.4
DARC 40	122-1/4"	920	1-5/8	1-1/8	4	3/4	1075	19000	16.8	8.4
DARC 44	152-1/4"	1270	1-5/8	1-1/8	5	3/4	1075	24500	21.0	10.5
DARC 50	152-1/4"	1350	1-5/8	1-1/8	5	3/4	1075	24000	21.0	10.5



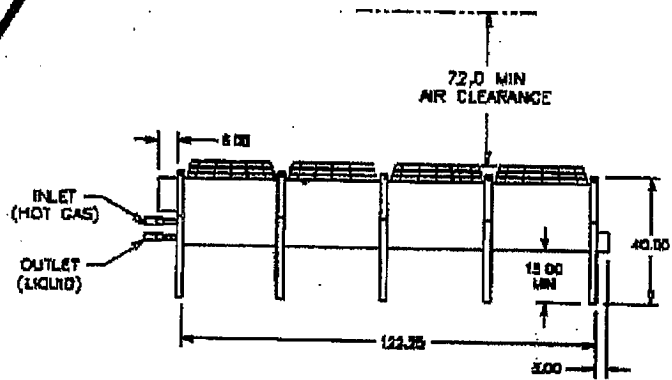
DUAL CIRCUIT CONNECTION LOCATION



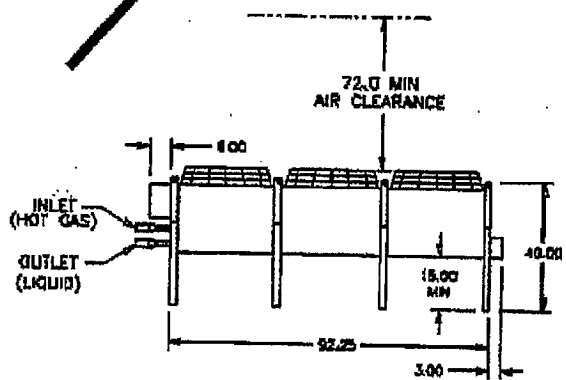
1 FAN UNIT, MODEL 6 THRU 9



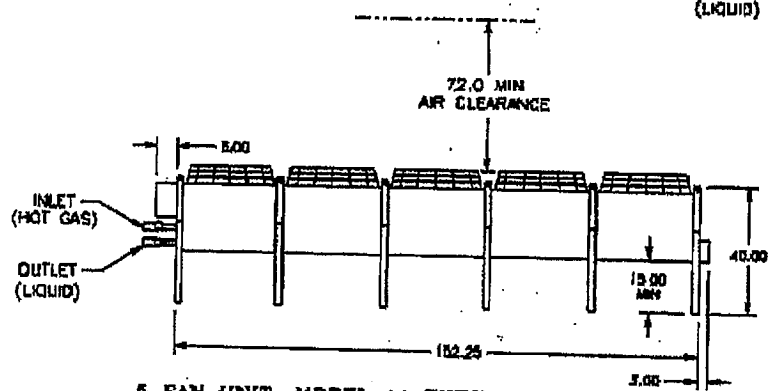
2 FAN UNIT, MODEL 11 THRU 17



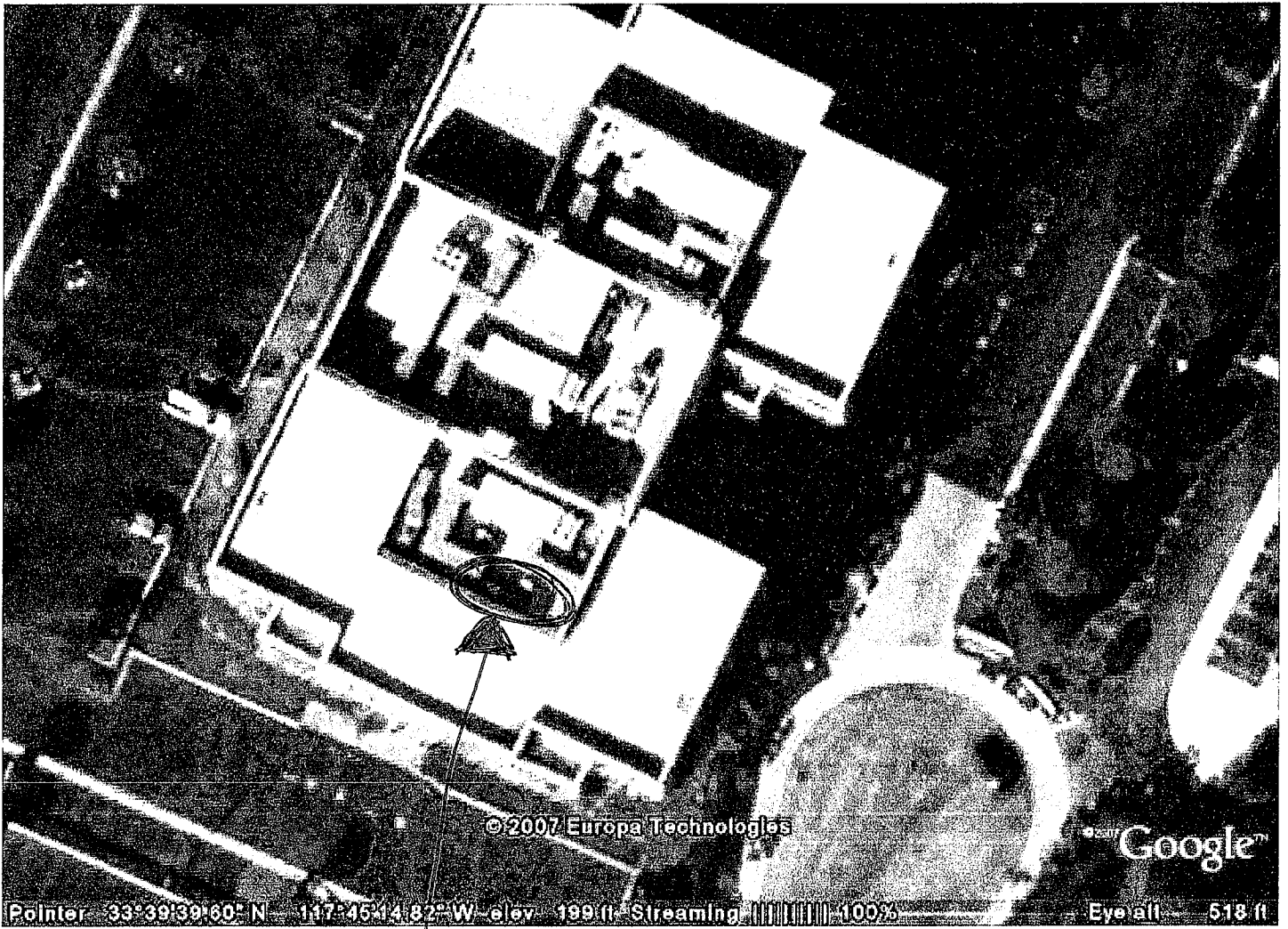
4 FAN UNIT, MODEL 30 THRU 40



3 FAN UNIT, MODEL 21 THRU 28



6 FAN UNIT, MODEL 44 THRU 60



new unit location.